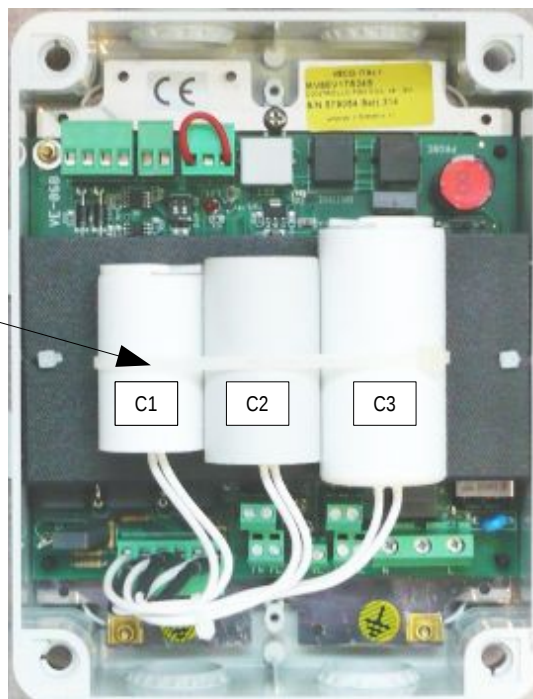


MV8 FAN COIL CONTROL



List of compatible fan coil

Part # and serial #



Fan speed Capacitors pack

The capacitor pack is designed for a specific model of fan coil. This is the only feature which makes the difference between the MV8 control boxes. The fan coil must be connected to its compatible control box.

MV8 FAN COIL CONTROL - POWER CONNECTIONS



FAN AND WATER VALVE FUSE 6,3 A

LD2 – fresh water probe
ON= cool mode
OFF= heat mode



Water valve lamp

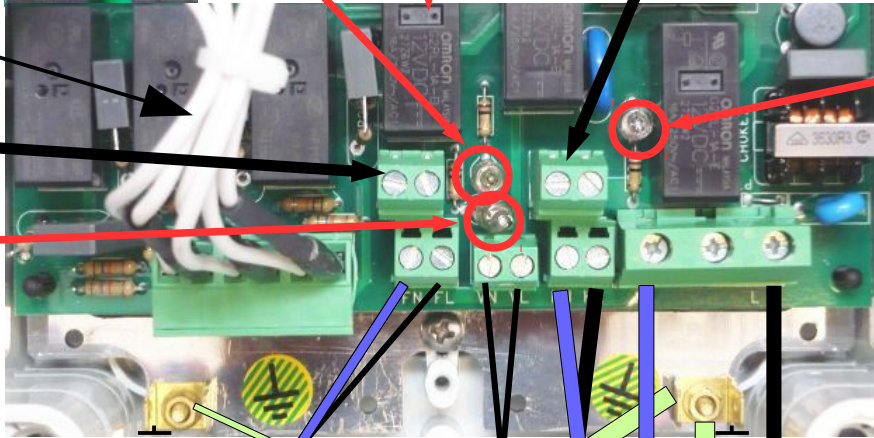
2nd EH HEATER

Capacitors pack connection

EH – Electrical Heat lamp

2nd FAN

Fan motor lamp



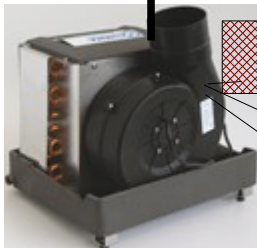
GND

GND

FAN POWER SUPPLY
230V – 50/60 Hz
3 x 1mm²
RESPECT SEQUENCE
N (blue) - L (black or brown)



WATER VALVE
3 x 1 mm²

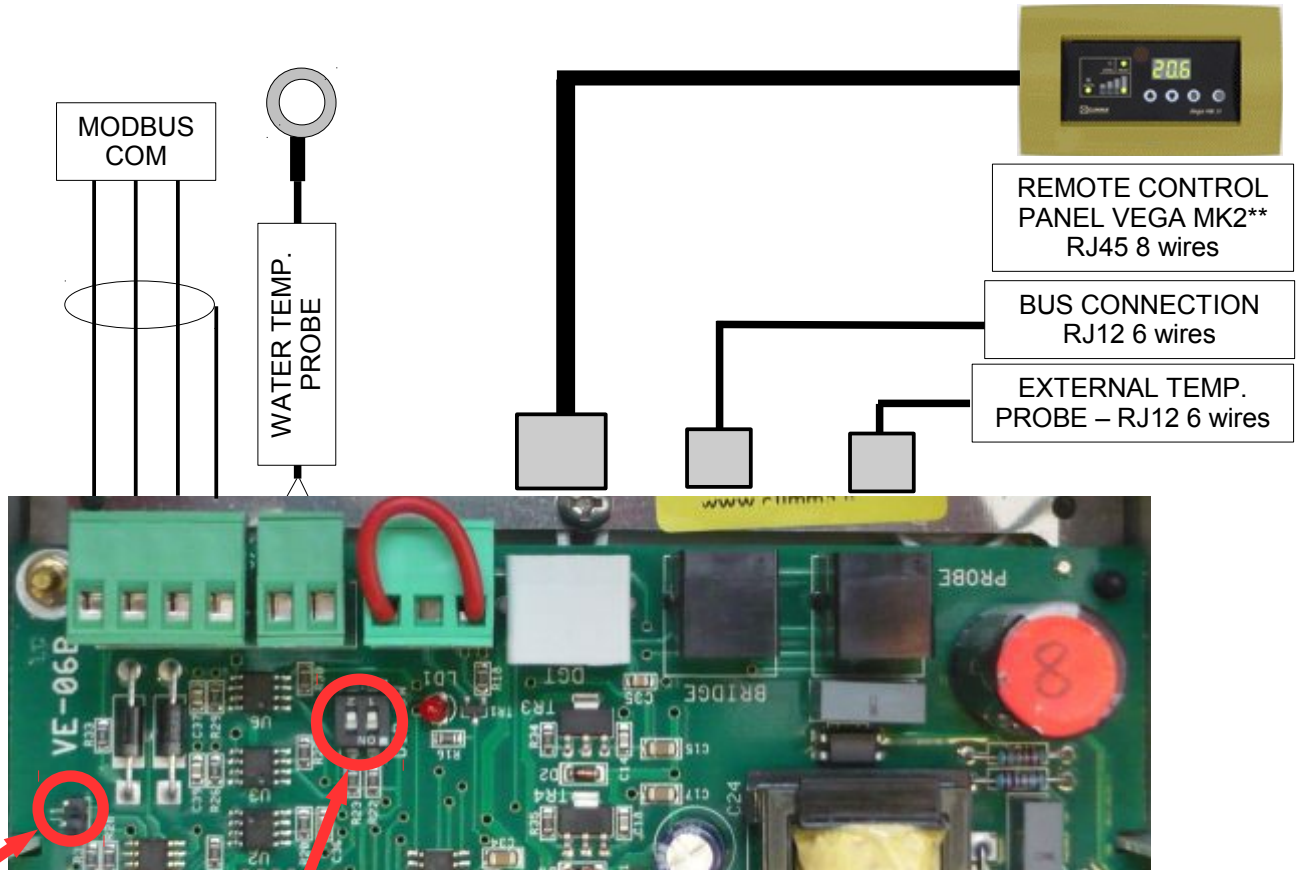


E.H. HEATER
230V – 50/60 Hz
3 x 1,5 mm²

MAINS SUPPLY
230V – 50/60 Hz
3 x 2.5mm²
RESPECT SEQUENCE



MV8 FAN COIL CONTROL - BOARD CONTROL CONNECTIONS



END OF MODBUS JUMPER

** Important note: Vega MK2 panel must have the sw release 5.6 or higher

MODE SWITCH	
MODE SWITCH LEGEND	
	NPr - No Program
	Pr0 - Fan only control
	Pr1 - Water valve
	Pr2 - Water valve + Strip heater



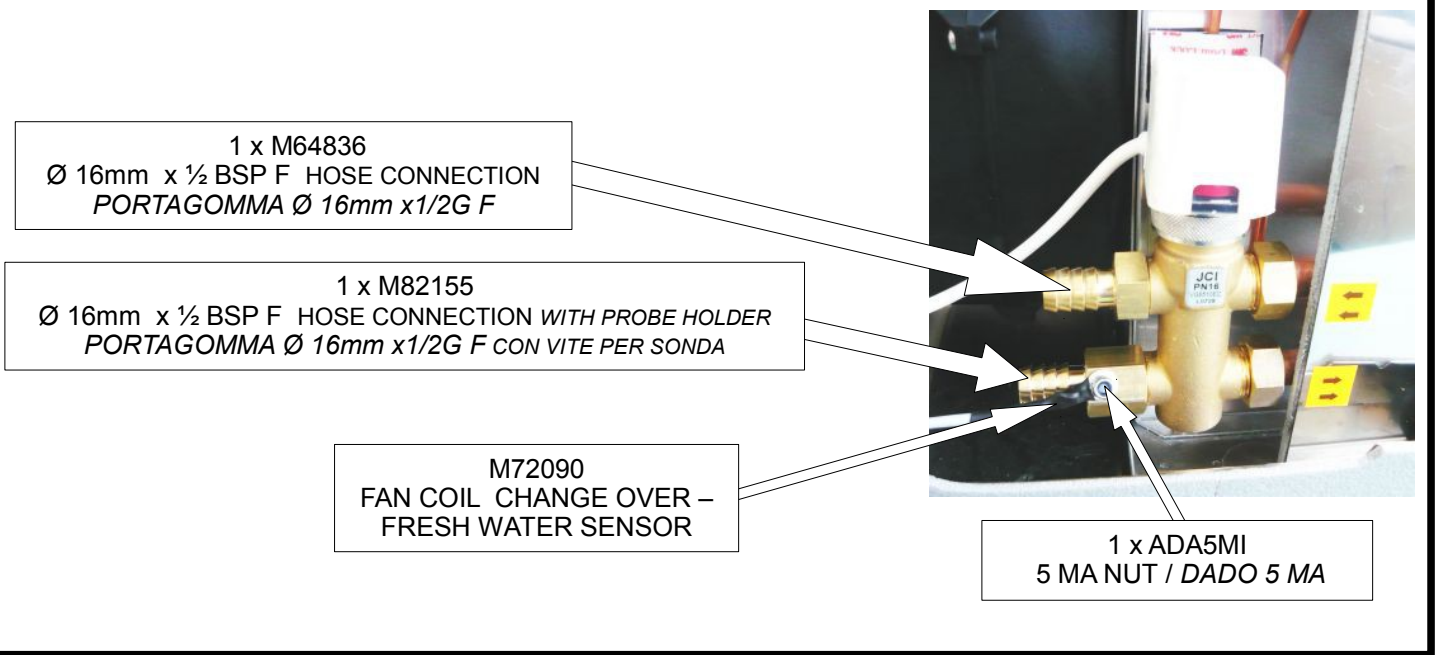
DL1 Logic circuit green LED

IMPORTANT NOTICE
 the MV8 control box is delivered without MODE setting (Npr) and must be set to the actual fan coil configuration

ATTENZIONE
 il controllo MV8 in origine non è settato (Npr) e deve essere settato secondo la configurazione del fan coil

FAN COIL MEVA "J" - 4 WAYS WATER VALVE - VALVOLA ACQUA 4 VIE

ASSEMBLY EXAMPLE - ESEMPIO DI MONTAGGIO



FAN COIL MEVA "J"- FAN ONLY CONTROL – CONTROLLO SOLO VENTILATORE

ASSEMBLY EXAMPLE - ESEMPIO DI MONTAGGIO

